

ASK ENGINEERS



ISO 6020/2 HYDRAULIC CYLINDERS

Compact tie rod cylinders for working pressure
Up to 160 bar

ENERGIZING FLUID SINCE 1994

Contact us at – askengineers1@gmail.com

8605795124

Address- SOHAM INDUSTRIAL COMPLEX, Shop no.6, Plot no.318, Sector 10, P.C.N.T.D.A, Pradhikaran, Bhosari, Pune-26

Website- www.askengineers.in

PRODUCT FEATURE

ASK ENGINEERS Cylinders as per ISO 6020/2: 2006 (E) are of compact design and suitable for working for pressure up to 160 bar with following constructional details:

Barrel- Made from cold drawn seamless tubes and honed to a surface finish of 0.4 micron and higher

Piston Rod- Made from medium carbon steel and hard chrome plated to a smooth finish

Gland- Phosphorous bronze bush inserted for smooth operation of piston rod and to provide sufficient guide to piston rod

End caps- Fine machined from steel, and constructed with a sturdy design to withstand high loads

Tie Rods- Made from high tensile steel rod and toughen to value of 28

Mountings- Various types of ISO mountings available according to the requirement

Cushioning- Provided with a needle valve and check valve for providing accurate damping action at the end of the stroke

Cushioning screw- For fine adjustment of cushioning

Air bleed- Screw provided for releasing the air trapped in cylinder

SEALING SYSTEM

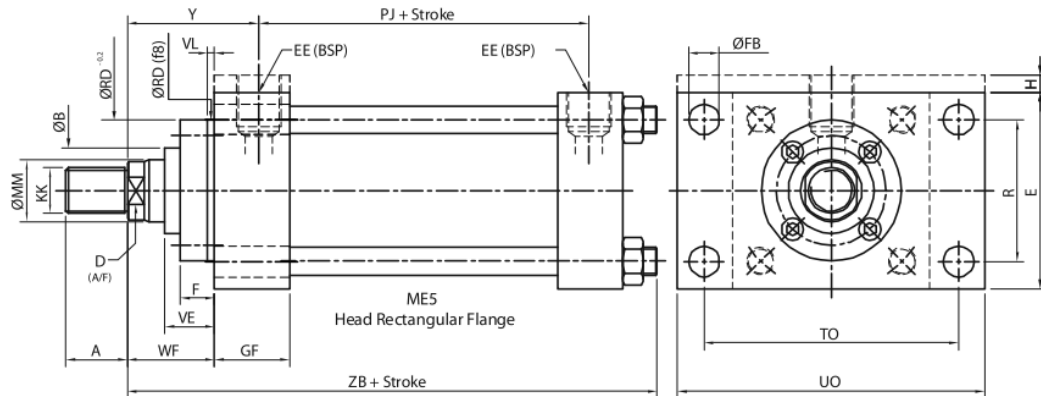
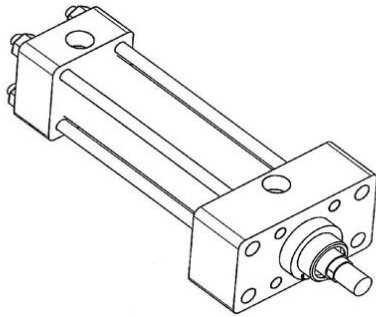
Piston seal- Provided with one TURCON GLYDRING for low friction, Stick/Slip movement along with two TURCITE SLYDRING

Gland seal- Polyurethane RU3 U-CUP seal is used which has a primary and secondary lip for maximum flexibility

Wiper seal- Double acting Polyurethane scraper is used. This wear resistant seal has a lip which scrapes off the dirt and dust particle entering the system

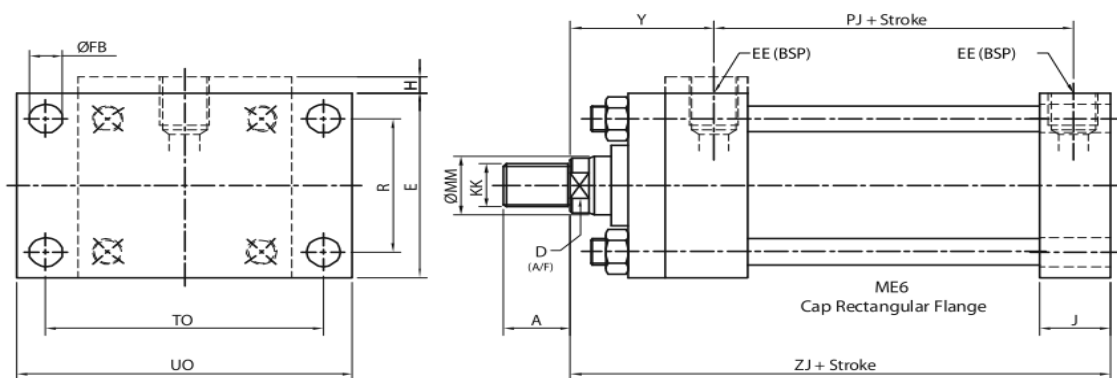
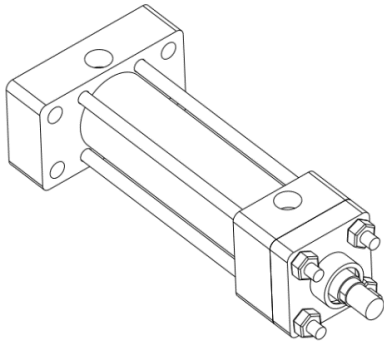
Static seals- Nitrile rubber 'O' Rings are used for sealing of face of end caps and locking of piston and piston rods

HEAD RECTANGULAR FLANGE ISO ME5



BORE	MM	KK	A	D	EE	H	Y	PJ	E	R	TO	UO	FB	GF	WF	B	RD	VE	F	VL	ZB
25	12	M10X1.25	14	9	1/4"	5	50	53	40	27	51	65	5.5	-	25	24	38	16	10	3	121
	18	M14X1.5	18	15												30	38				
32	16	M12X1.25	16	13	1/4"	5	60	56	45	33	58	70	6.6	-	35	26	42	22	10	3	137
	22	M16X1.5	22	18												34	42				
40	18	M14X1.5	18	15	3/8"	-	62	73	63	41	87	110	11	40	35	30	62	22	10	3	166
	28	M20X1.5	28	22												42	62				
50	22	M16X1.5	22	18	1/2"	-	67	74	75	52	105	130	14	42	41	34	74	25	16	4	176
	36	M27X2	36	30												50	74				
63	28	M20X1.5	28	22	1/2"	-	71	80	90	65	117	145	14	38	48	42	75	29	16	4	185
	45	M33X2	45	36												60	88				
80	36	M27X2	36	30	3/4"	-	77	93	115	83	149	180	18	44	51	50	82	29	20	4	212
	56	M42X2	56	46												72	105				
100	45	M33X2	45	36	3/4"	-	82	101	130	97	162	200	18	43	57	60	92	32	22	5	225
	70	M48X2	63	60												88	125				
125	56	M42X2	56	46	1"	-	86	117	165	126	208	250	22	47	57	72	105	32	22	5	260
	90	M64X3	85	80												108	150				
160	70	M48X2	63	60	1"	-	86	130	205	155	253	300	26	51	57	88	125	32	25	5	279
	110	M80X3	95	100												133	170				
200	90	M64X3	85	80	1- 1/4"	-	98	165	245	190	300	360	33	64	57	108	150	32	25	5	336
	140	M100X3	112	120												163	210				

CAP RECTANGULAR FLANGE ISO ME6



BORE	MM	KK	A	D	EE	H	Y	PJ	E	R	TO	UO	FB	J	ZJ
25	12	M10X1.25	14	9	1/4"	5	50	53	40	27	51	65	5.5	-	114
	18	M14X1.5	18	15	1/4"	5	60	56	45	33	58	70	6.6	-	128
32	16	M12X1.25	16	13	1/4"	5	60	56	45	33	58	70	6.6	-	128
	22	M16X1.5	22	18	3/8"	-	62	73	63	41	87	110	11	31	153
40	18	M14X1.5	18	15	3/8"	-	62	73	63	41	87	110	11	31	153
	28	M20X1.5	28	22	1/2"	-	67	74	75	52	105	130	14	32	159
50	22	M16X1.5	22	18	1/2"	-	67	74	75	52	105	130	14	32	159
	36	M27X2	36	30	1/2"	-	71	80	90	65	117	145	14	34	168
63	28	M20X1.5	28	22	1/2"	-	71	80	90	65	117	145	14	34	168
	45	M33X2	45	36	3/4"	-	77	93	115	83	149	180	18	38	190
80	36	M27X2	36	30	3/4"	-	77	93	115	83	149	180	18	38	190
	56	M42X2	56	46	3/4"	-	82	101	130	97	162	200	18	38	203
100	45	M33X2	45	36	3/4"	-	82	101	130	97	162	200	18	38	203
	70	M48X2	63	60	1"	-	86	117	165	126	208	250	22	38	232
125	56	M42X2	56	46	1"	-	86	117	165	126	208	250	22	38	232
	90	M64X3	85	80	1"	-	86	130	205	155	253	300	26	51	245
160	70	M48X2	63	60	1"	-	86	130	205	155	253	300	26	51	245
	110	M80X3	95	100	1-1/4"	-	98	165	245	190	300	360	33	53	299
200	90	M64X3	85	80	1-1/4"	-	98	165	245	190	300	360	33	53	299
	140	M100X3	112	120	1-1/4"	-	98	165	245	190	300	360	33	53	299

ORDERING DETAILS

Follow the following format while ordering-

ASK- 160HTRC	CYLINDER BORE	PISTON ROD DIA.	STROKE	MOUNTING STYLE	CUSHIONING
-----------------	------------------	--------------------	--------	-------------------	------------

CUSHIONING

CB= CUSHIONING AT BOTH ENDS

NC= NON CUSHIONED

CC= CAP END CUSHIONING

CH= HEAD END CUSHIONING

MOUNTING STYLES

ME5- HEAD RECTANGULAR FLANGE

ME6- CAP RECTANGULAR FLANGE

MP1- CAP FIXED CLEVIS

MP3- CAP FIXED PLAIN EYE

MS2- SIDE LUGS

MT1- HEAD INTEGRAL TRUNION

MT2- CAP INTEGRAL TRUNION

MT4- INTERMEDIATE TRUNION

MX2- CAP TIE ROD EXTENDED

MX3- HEAD TIE ROD EXTENDED